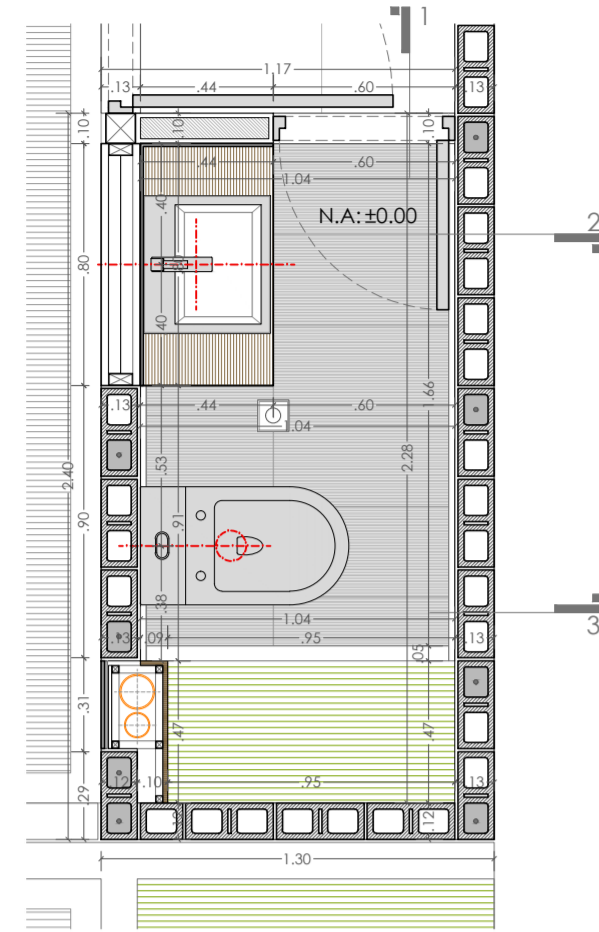
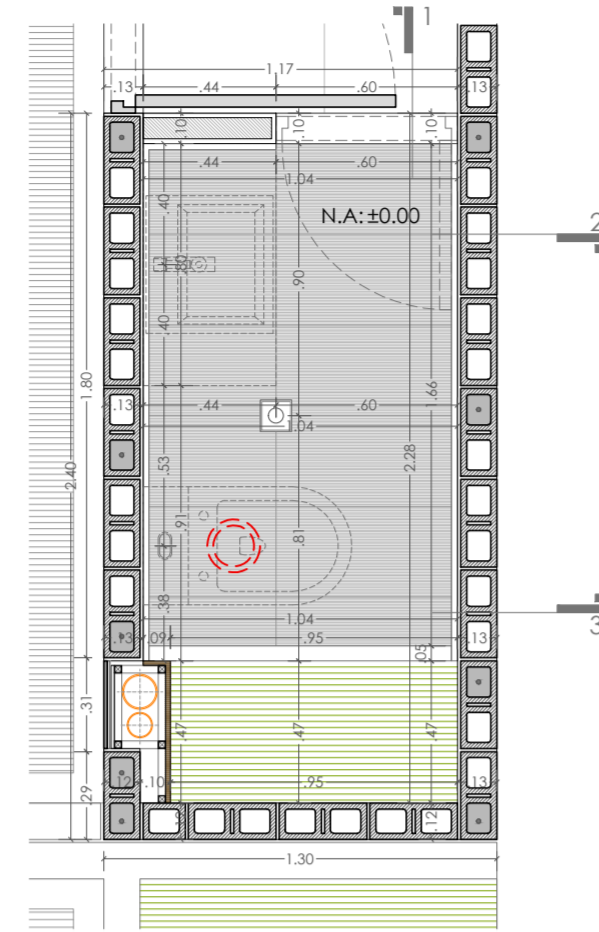


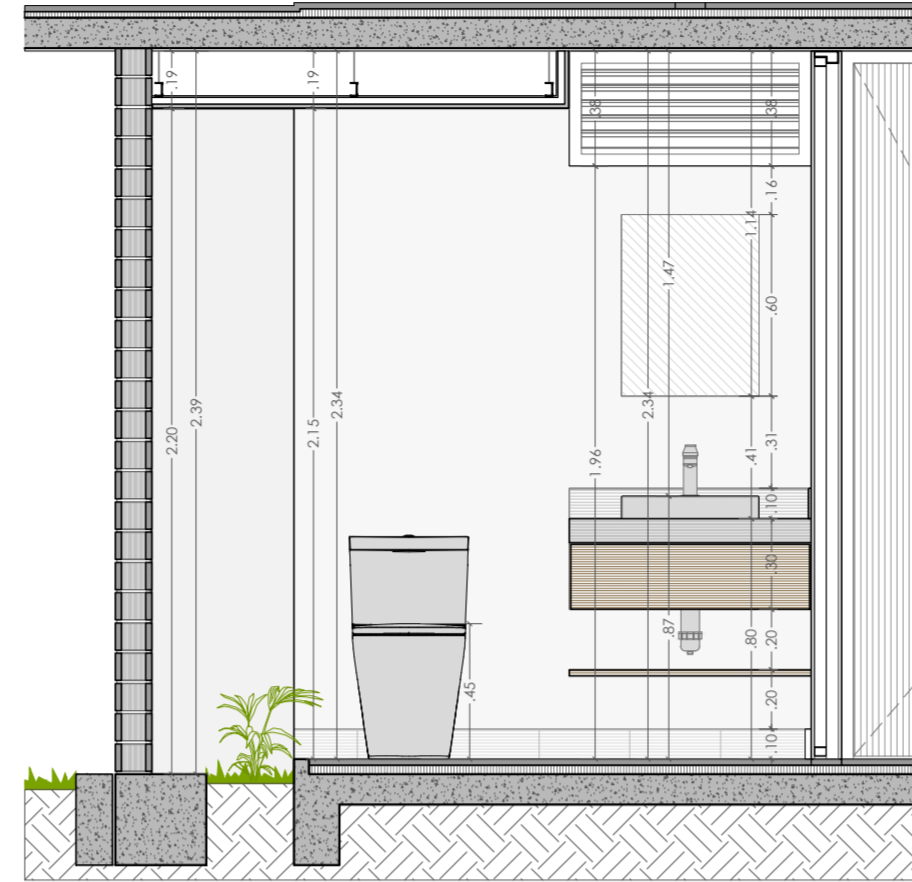
DETALLE BAÑO SOCIAL



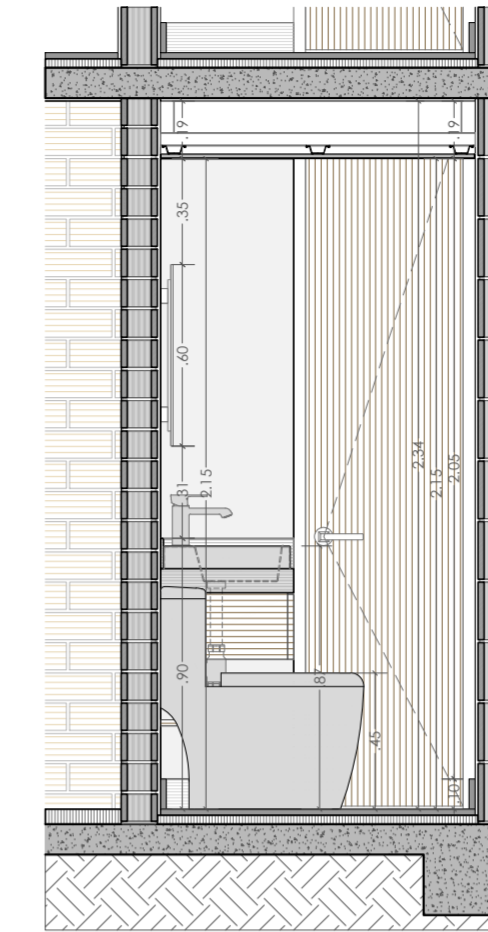
PLANTA DETALLE / ESC. 1:25



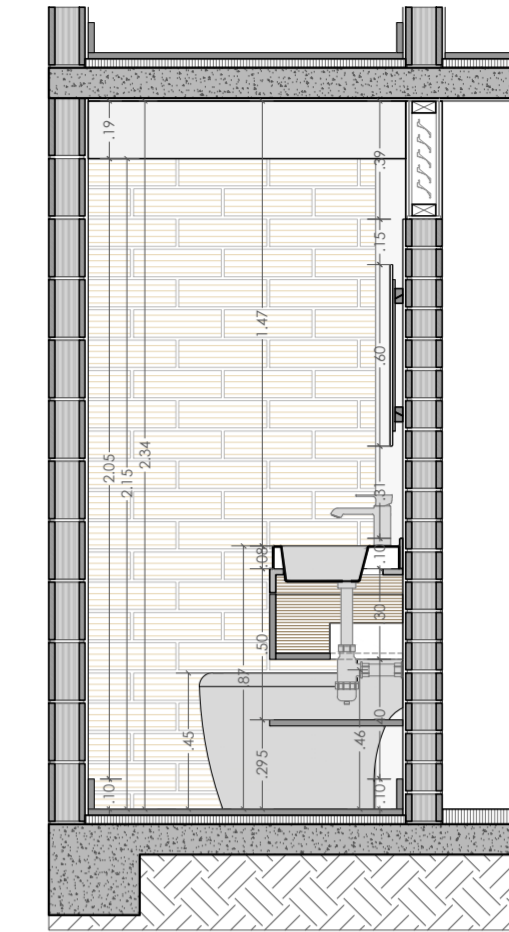
PLANTA PISO / ESC. 1:25



SECCIÓN I / ESC. 1:25

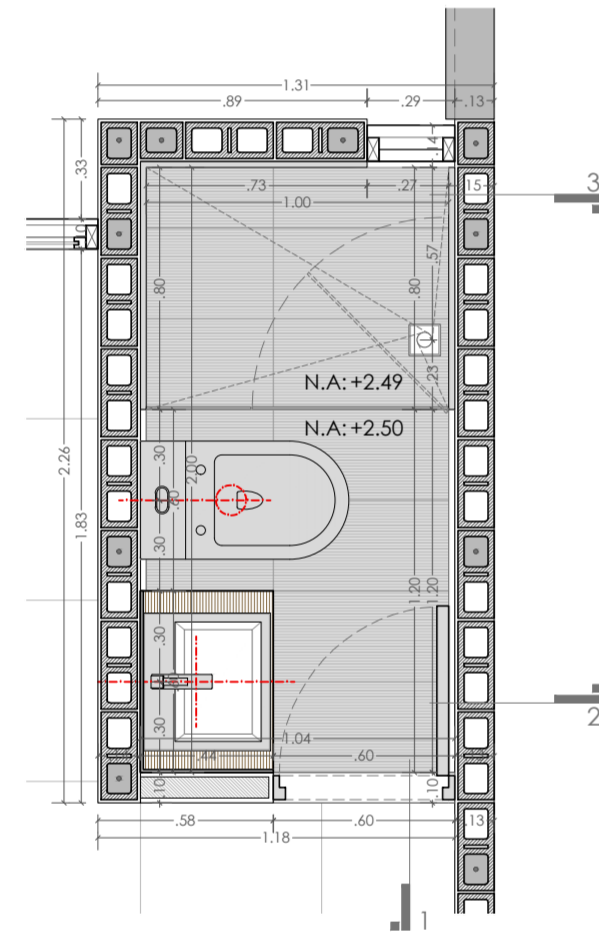


SECCIÓN 2 / ESC. 1:25

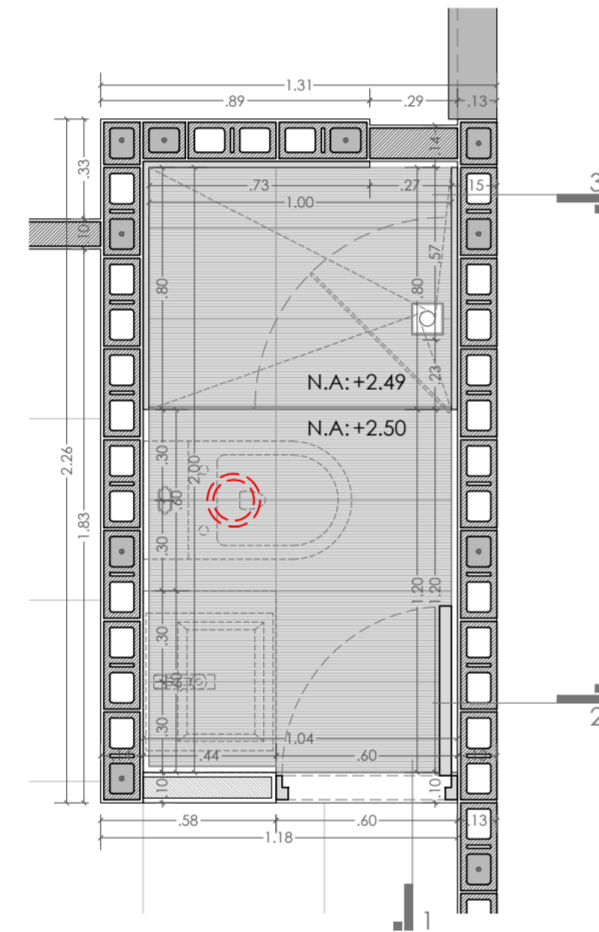


SECCIÓN 3 / ESC. 1:25

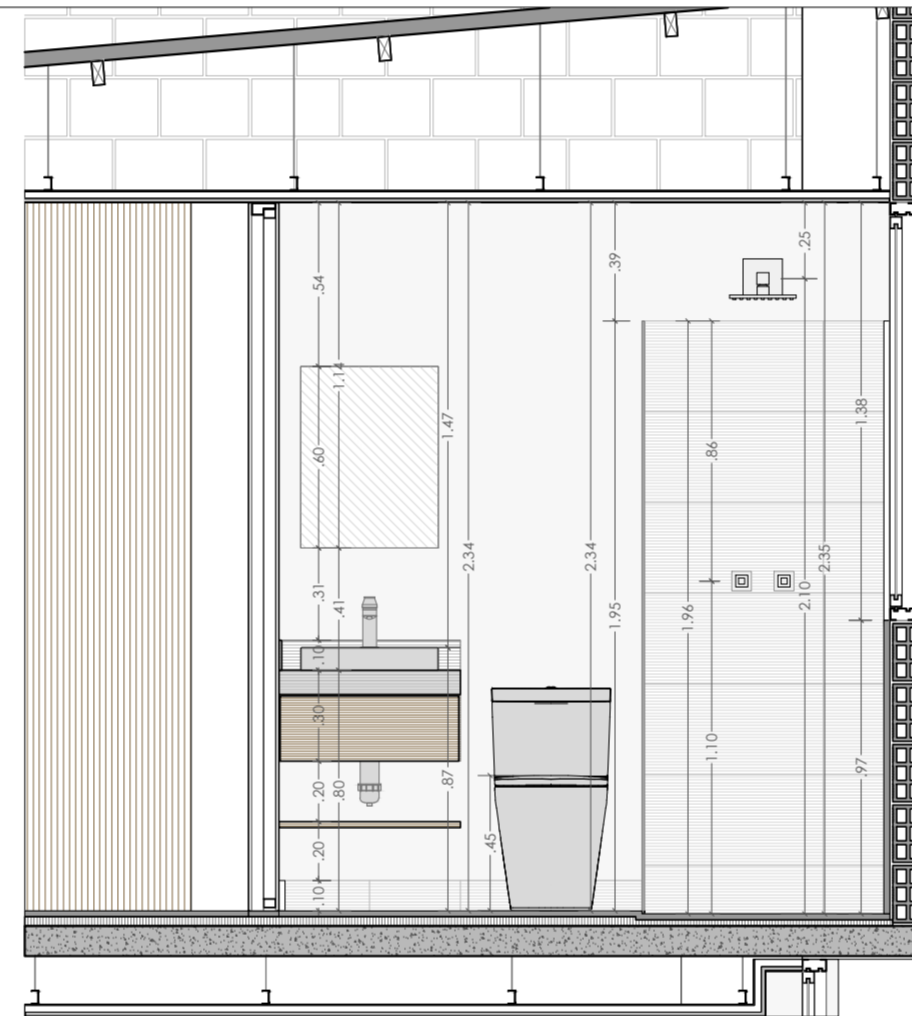
DETALLE BAÑO 01



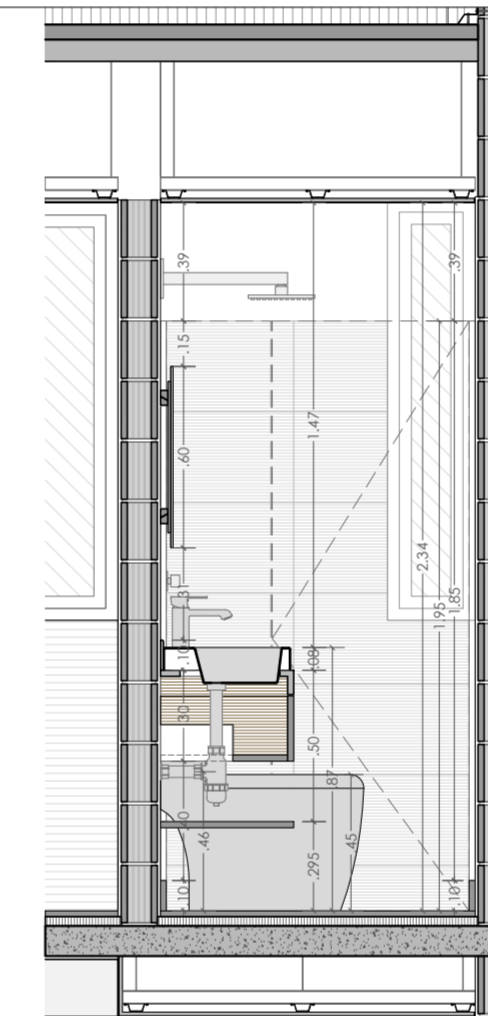
PLANTA DETALLE / ESC. 1:25



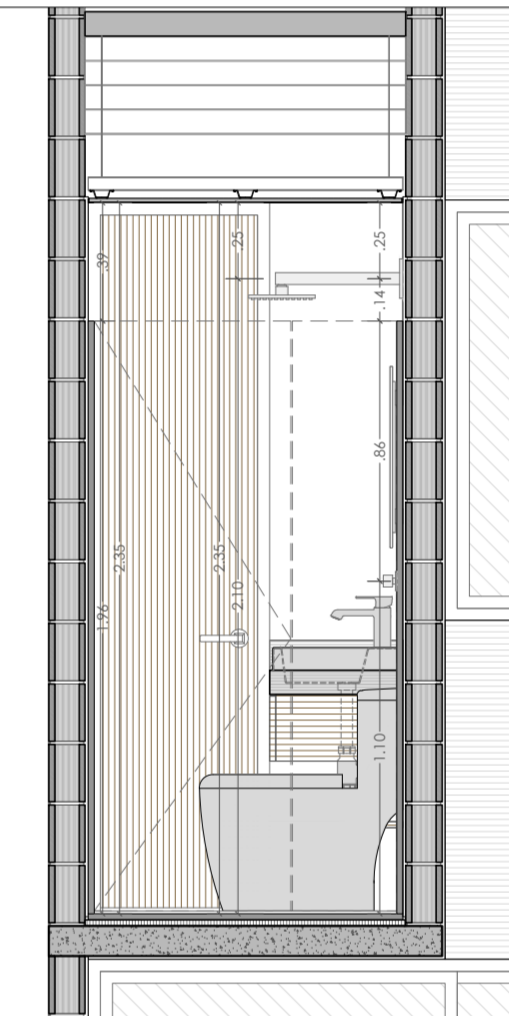
PLANTA PISO / ESC. 1:25



SECCIÓN I / ESC. 1:25

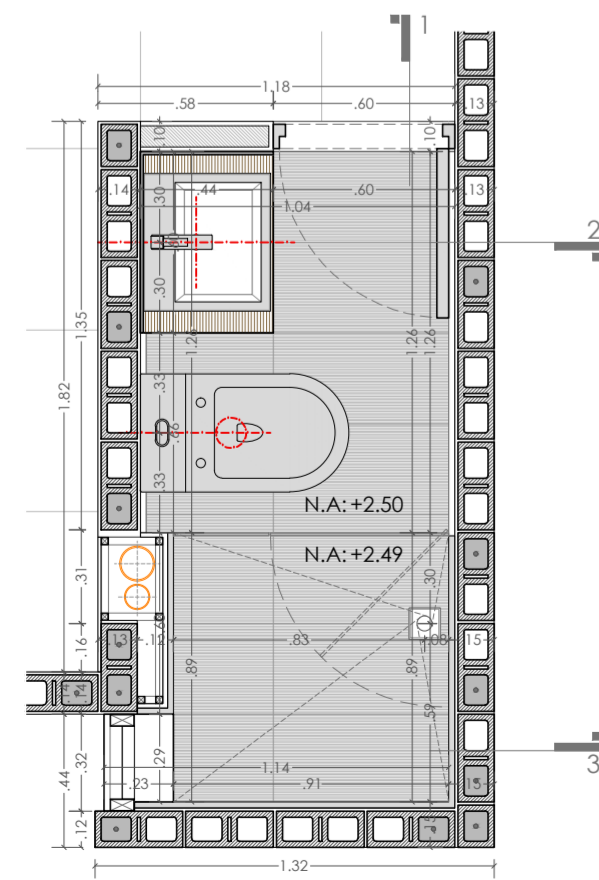


SECCIÓN 2 / ESC. 1:25

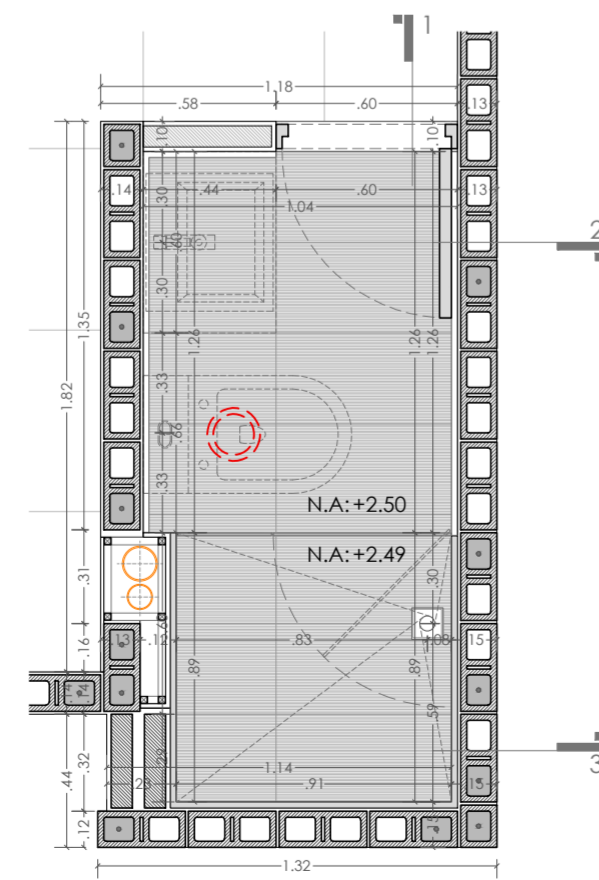


SECCIÓN 3 / ESC. 1:25

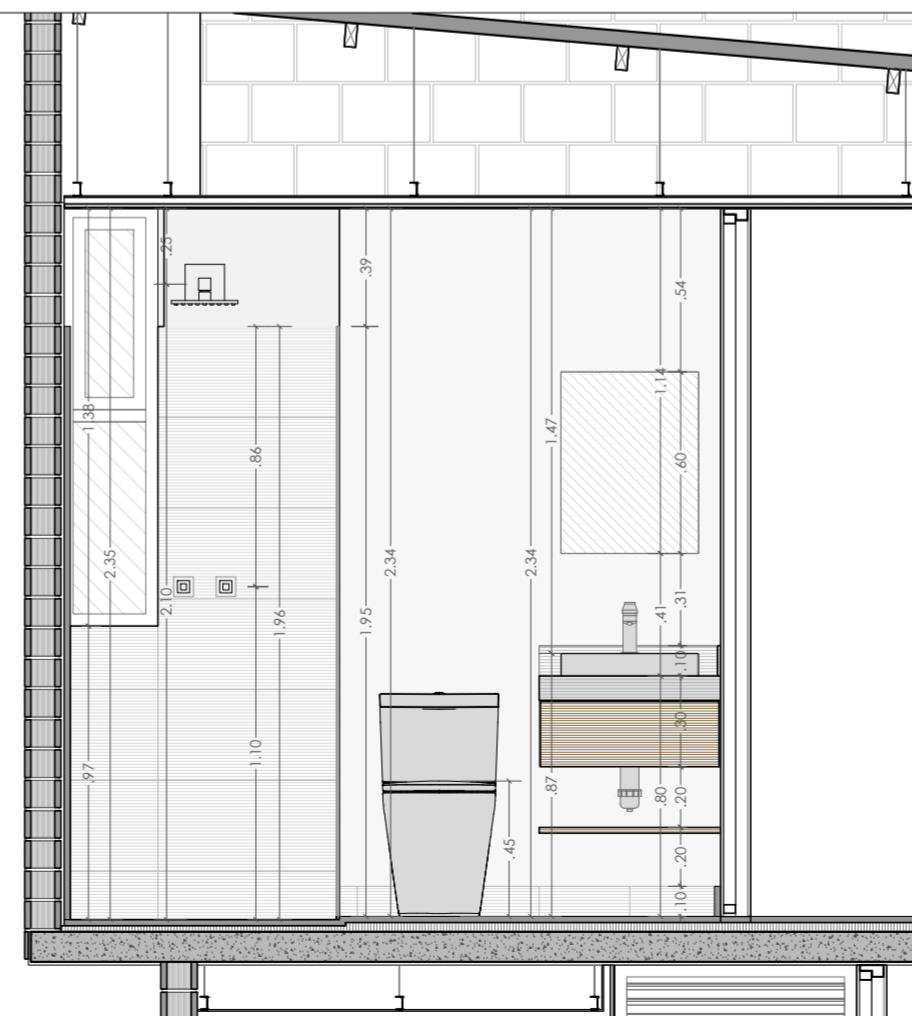
DETALLE BAÑO 02



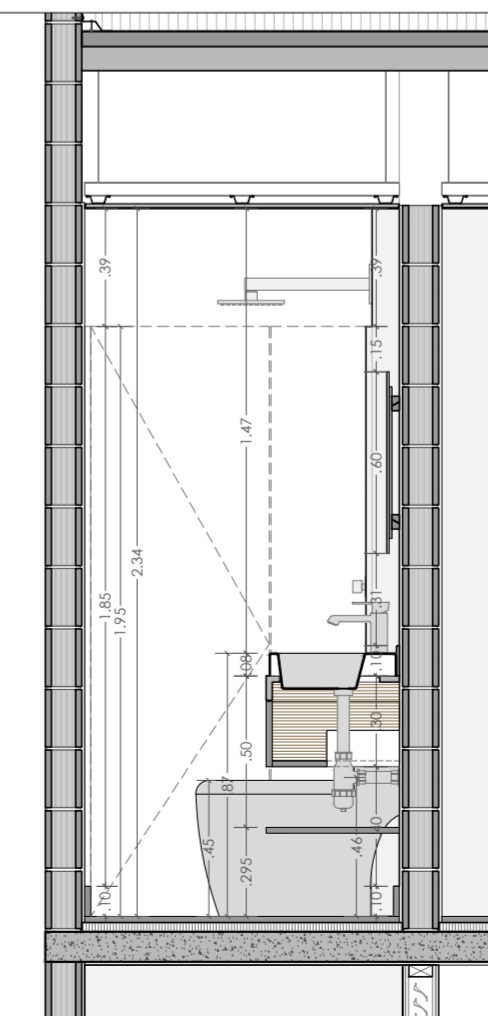
PLANTA DETALLE / ESC. 1:25



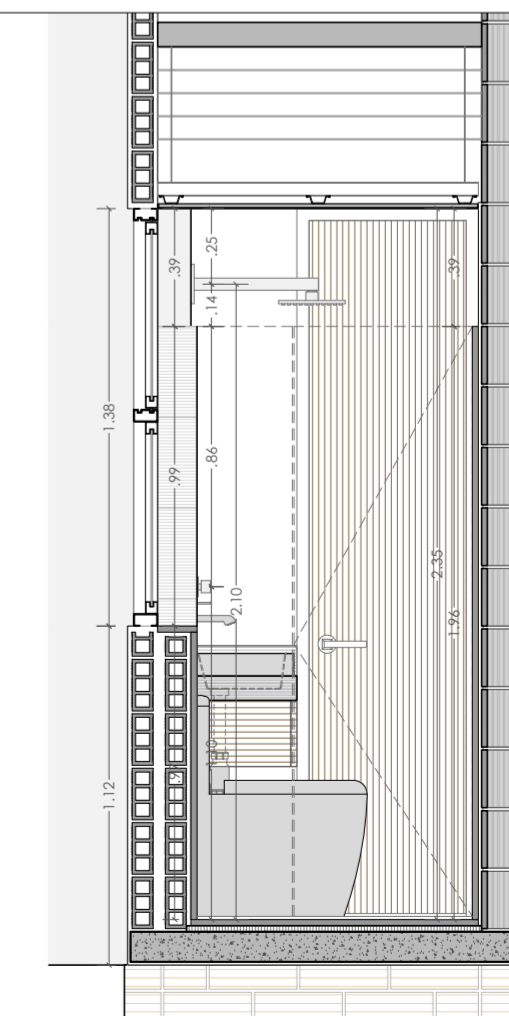
PLANTA PISO / ESC. 1:25



SECCIÓN I / ESC. 1:25



SECCIÓN 2 / ESC. 1:25



SECCIÓN 3 / ESC. 1:25



03 - II - 2021
ESC. INDICADA

PLANO ARO.

OBSERVACIONES

PROPIETARIO

SUDOL
SOLUCIONES URBANÍSTICAS COLOMBIA

CONTENIDO

DETALLE BAÑO SOCIAL
DETALLE BAÑO 01
DETALLE BAÑO 02

DISEÑADORES

DAVID E. ARCILA
DANIELA MELO
EIDER M. RODRIGUEZ

DISEÑA

OBRA CONCEPTUAL
M.P. A48582015-110769655

PROYECTO

SANTA ELENA
KM 3 VÍA PASTO DE LA BOLSA

